

## Easy calibration using ColorNavigator 5.0

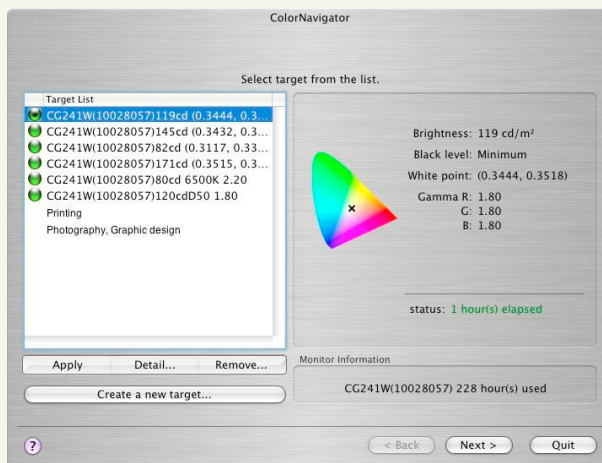
### Optimal precision on your monitor

Due to perfect colour reproduction, each ColourGraphic monitor supports simple and precise calibration. The ColorNavigator software developed by EIZO is an important tool for this purpose. ColorNavigator has undergone extensive improvements and is completed with new, interesting features. It is available as of December 2007 (version 5.0).

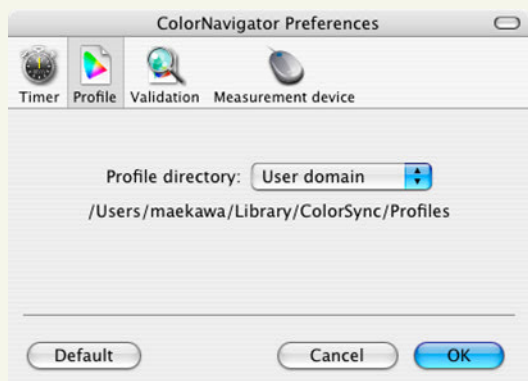
Version 5.0 supports Windows XP, XP(x64), Vista(x86), Vista(x64), Mac OS X 10.3.9 to 10.4 operating systems. The new ColorNavigator offers a quick choice of already created settings and profiles immediately after start-up. If needed, you can quickly switch between them making it unnecessary to measure them again. The green circle signals that the display quality is correct or if the monitor requires recalibration. This leads to flexibility, saves time and lowers your costs.

The CG241W, CG221 and CG220 models have high demands on calibration software, considering their extensive colour space. The LCD backlight spectrum and display colour pigments require correction tables for various measuring instruments. And it's only ColorNavigator V5.0 that provides these. The result: The processes of calibrating and creating profiles achieve the greatest precision possible.

Testing the quality of colour reproduction is an entirely new function. This function measures the testing colour arrays on the calibrated display and calculates deviations from the respective profile. All colour deviations are shown as values delta-E, either graphically or in a table. The testing colour arrays and their theoretical values (CIELAB or XYZ) can be modified.



Date	Max.	Ave.	White	No.	Color Patch	Measured	Profile	delta-E
07/10/26	4.0	1.3	0.8	0	(30, 0, 0)	(3.5, 12.8, 3.6)	(3.4, 11.3, 4.2)	1.6
				1	(63, 0, 0)	(12.2, 32.3, 17.6)	(12.4, 32.1, 18.9)	1.3
				2	(127, 0, 0)	(30.2, 54.8, 44.1)	(30.7, 55.2, 46.5)	2.4
				3	(191, 0, 0)	(46.4, 73.9, 65.0)	(46.8, 74.8, 67.2)	2.4
				4	(255, 0, 0)	(61.3, 92.6, 83.5)	(61.5, 92.6, 83.8)	0.4
				5	(0, 30, 0)	(6.5, -17.8, 7.4)	(6.0, -16.4, 7.4)	1.5
				6	(0, 63, 0)	(19.7, -51.1, 24.1)	(19.7, -50.6, 25.2)	1.2
				7	(0, 127, 0)	(42.8, -88.1, 44.4)	(43.1, -86.9, 45.4)	1.6
				8	(0, 191, 0)	(63.3, -118.9, 6...	(63.6, -117.8, 6...	1.3
				9	(0, 255, 0)	(82.3, -145.7, 7...	(82.4, -145.8, 7...	0.1
				10	(0, 0, 30)	(1.6, 4.2, -17.3)	(1.6, 3.1, -15.6)	1.9
				11	(0, 0, 63)	(4.2, 19.4, -42.0)	(4.7, 17.1, -41.0)	2.6
				12	(0, 0, 127)	(14.7, 39.5, -73.3)	(16.0, 35.9, -72.5)	4.1



Version 5.0 also offers better control. Administrator rights are no longer necessary for calibrating and creating profiles. Profiles can be saved in folders at random. Calibration with the newest Mac computers runs faster than usual.

EIZO Colour Graphic CE and CG monitors support ColorNavigator 5.0.

see what's next

